

PRU

Miniature Regulator (Ø4, Ø6 built-in fitting)

○ Compact design and available up to 10-station

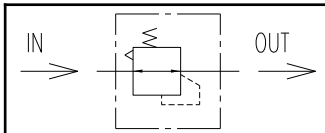


■ Specification

| | | |
|-------------------------------|------|-----------------------------|
| Fluid | | Compressed air |
| Max. operating pressure | | 1.0 MPa |
| Proof pressure | | 1.5 MPa |
| Set pressure | | 0.05 ~ 0.7 MPa |
| Fluid and ambient temperature | | 5 ~ 60 °C |
| Flow rate | Ø 04 | 200 Nℓ/min |
| | Ø 06 | 350 Nℓ/min |
| Type of exhaust | | Relief type |
| Back flow | | Standard (Un-balanced type) |
| Weight | | 68 g |

Note) When using for backflow, please set the pressure to be at least 0.1 MPa.

Symbol



Note) Back flow function is standard. When the inlet pressure drops, the set pressure flows back towards the inlet.

■ Configuration

PRU - * - * - *

Series

| | |
|-----|---------------------|
| PRU | Miniature Regulator |
|-----|---------------------|

IN-OUT Port size

| Symbol | Dimension (Tube Size) |
|--------|--------------------------|
| 44 | IN : Ø4 mm / OUT : Ø4 mm |
| 66 | IN : Ø6 mm / OUT : Ø6 mm |

※ Only straight type fitting is available

Number of stations

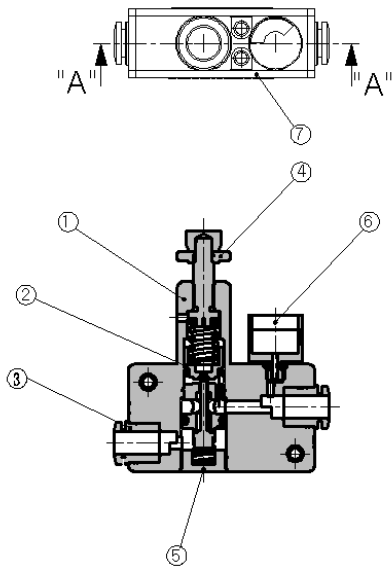
| Symbol | Station |
|--------|--------------------|
| Blank | 1 station (single) |
| M2 | 2 stations |
| M3 | 3 stations |
| M4 | 4 stations |
| M5 | 5 stations |
| M6 | 6 stations |
| M7 | 7 stations |
| M8 | 8 stations |
| M9 | 9 stations |
| M10 | 10 stations |

※ Individual piping is only available.

Pressure Gauge

| Symbol | Type |
|--------|----------------|
| G | MPa unit gauge |

■ Structure



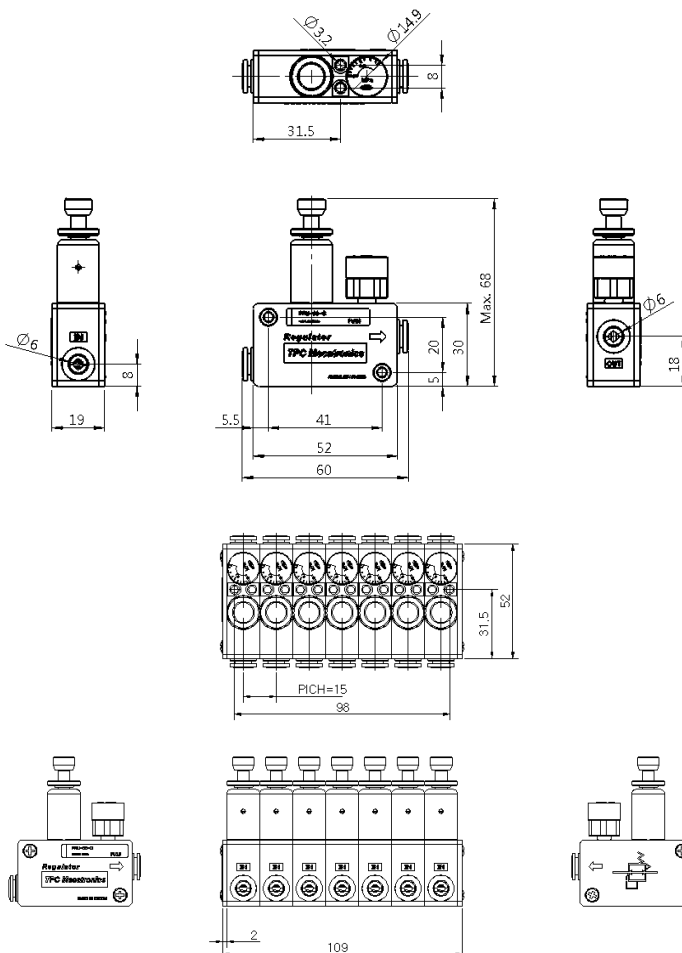
➤ Parts list

| No | Item | Material | Note |
|----|---------------|-----------------------------------|------|
| 1 | Body | PBT | |
| 2 | Piston Ass'y | POM, NBR | |
| 3 | Fitting Ass'y | - | |
| 4 | Lock Nut | Copper(electroless nickel plated) | |
| 5 | Valve Guide | Copper(electroless nickel plated) | |

➤ Maintenance components

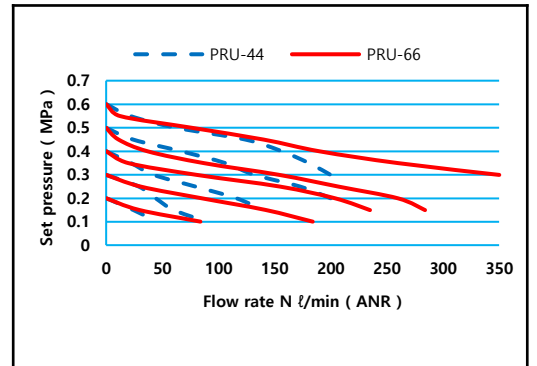
| No | Item | Material | Part number |
|----|--------------|----------|---------------|
| 6 | Gauge Ass'y | - | PG15-08M-01 |
| 7 | Body Cover A | PBT | PRU-40-001-01 |
| | Body Cover B | PBT | PRU-40-002-01 |

■ Dimensions



■ Flow characteristic

▶ PRU-44 / PRU-66



■ Pressure characteristic

